



AUTOMATION

CILINDRI CARTUCCIA  
CARTRIDGE CYLINDERS

SERIE

TA



MADE IN ITALY

**CILINDRI CARTUCCIA Ø06 - Ø16**  
**CARTRIDGE CYLINDERS Ø06 - Ø16**



**VERSIONI - VERSIONS**



**Materiali - Materials**

|                     |   |
|---------------------|---|
| Corpo - Body        | Ottone nichelato<br>Nickel coated brass         |
| Stelo - Piston rod  | Acciaio inox AISI303<br>Stainless steel AISI303 |
| Guarnizioni - Seals | Poliuretano<br>Polyurethane                     |

**Informazioni tecniche - Technical features**

|                                       |  |
|---------------------------------------|--|
| Fluido - Fluid                        | Aria compressa filtrata lubrificata e non<br>Filtered and lubricated or not compressed air |
| Temp. impiego<br>Working Temp.        | Ø6 -20°C +80°C con aria secca / w dry air<br>Ø10-16 -35°C +80°C con aria secca / w dry air |
| Pressione MIN/MAX<br>MIN/MAX pressure | 2bar / 10 bar  |

**CHIAVE DI CODIFICA - KEY CODE**

| Base |    | Versioni - Versions              |   |          |   |                         |   | Ø                    | Corsa - Stroke |      |
|------|----|----------------------------------|---|----------|---|-------------------------|---|----------------------|----------------|------|
| TA   | SA | Semplice effetto molla anteriore | 0 | Standard | T | Stelo filettato         | N | Guarnizioni standard | Ø06            | 0005 |
|      |    | Single acting front spring       |   |          |   | Threaded piston rod     |   | Standard seals       |                |      |
|      |    |                                  |   |          | N | Stelo non filettato     | H | Guarnizioni Viton    | ...            | ...  |
|      |    |                                  |   |          |   | Not threaded piston rod |   | Viton seals          | Ø16            | 0015 |

**CODICE ESEMPIO - SAMPLE CODE**

|    |    |   |   |   |     |      |   |          |          |
|----|----|---|---|---|-----|------|---|----------|----------|
| TA | SA | 0 | T | N | 010 | 0010 | + | varianti | variants |
|----|----|---|---|---|-----|------|---|----------|----------|

**VARIANTI - VARIANTS**

| Filetto stelo speciale<br>Special piston rod thread | Prolunga stelo<br>Extended piston rod |
|---|---------------------------------------|
| Su richiesta  | PXXX                                  |
| On request  |                                       |

**CORSE STANDARD - STANDARD STROKES**

| Ø  | 5 | 10 | 15 |
|----|---|----|----|
| 6  | ° | °  | °  |
| 10 | ° | °  | °  |
| 16 | ° | °  | °  |

° = Cilindro semplice effetto - Single acting cylinder

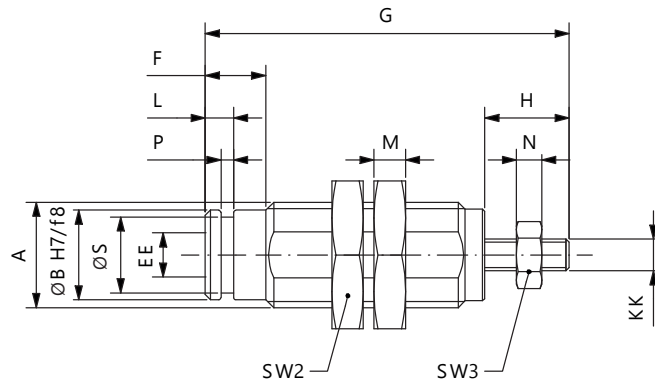
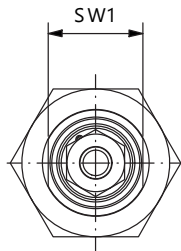
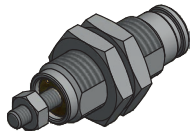
**FORZE TEORICHE - THEORETICAL FORCES**

| Forze teoriche molle - Theoretical spring forces (N) |     |      |     |      |     |      |
|--|-----|------|-----|------|-----|------|
| Molla anteriore - Front spring                       |     |      |     |      |     |      |
| Corsa - Stroke                                       |     |      |     |      |     |      |
| Ø  | 5   |      | 10  |      | 15  |      |
|  | F1  | F2   | F1  | F2   | F1  | F2   |
| 06   | 1,6 | 3,7  | 1,6 | 3,9  | 1,6 | 3,9  |
| 10   | 7,4 | 11,5 | 6   | 12,5 | 6,8 | 12,8 |
| 16   | 8,4 | 9,5  | 8,4 | 10,7 | 7,4 | 10,7 |

| Forze teoriche a 6 bar      |                     |
|-----------------------------|---------------------|
| Theoretical forces at 6 bar |                     |
| Ø                           | Forza di spinta (N) |
|                             | Thrust force (N)    |
| 06                          | 17                  |
| 10                          | 47                  |
| 16                          | 121                 |

**SEMPLICE EFFETTO MOLLA ANTERIORE - SINGLE ACTING FRONT SPRING**

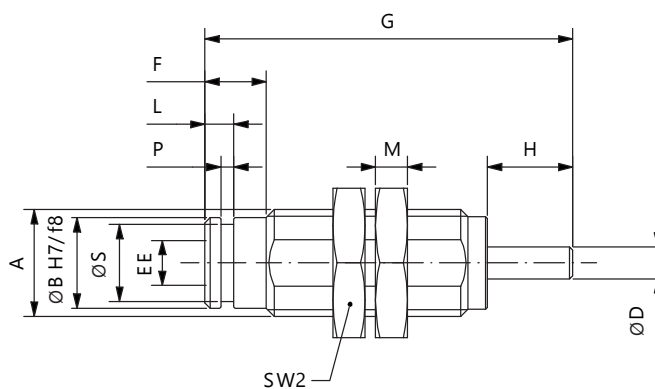
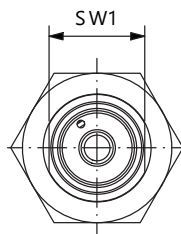
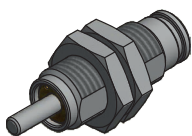
**TASA0TN - TASA0TH STELO FILETTATO - THREADED PISTON ROD**



| Ø  | A       | ØB  | ØS   | P   | L   | EE | KK | SW1 | F | G 05 | G 10 | G 15 | H    | M | SW2 | N   | SW3 |
|----|---------|-----|------|-----|-----|----|----|-----|---|------|------|------|------|---|-----|-----|-----|
| 6  | M10X1   | 8,5 | 7,2  | 1,2 | 2,7 | M5 | M3 | 9   | 5 | 27,5 | 34,5 | 41,5 | 8    | 3 | 14  | 2,4 | 5,5 |
| 10 | M15X1,5 | 12  | 9,8  | 2   | 3,5 | M5 | M4 | 14  | 7 | 33,5 | 40   | 47   | 10,5 | 4 | 19  | 3,2 | 7   |
| 16 | M22X1,5 | 19  | 16,8 | 2   | 4   | M5 | M5 | 20  | 6 | 40   | 45   | 50   | 13   | 5 | 27  | 4   | 8   |

**SEMPLICE EFFETTO MOLLA ANTERIORE - SINGLE ACTING FRONT SPRING**

**TASA0NN - TASA0NH STELO NON FILETTATO - NOT THREADED PISTON ROD**



| Ø  | A       | ØB  | ØS   | P   | L   | EE | KK | SW1 | F | G 05 | G 10 | G 15 | H    | M | SW2 |
|----|---------|-----|------|-----|-----|----|----|-----|---|------|------|------|------|---|-----|
| 6  | M10X1   | 8,5 | 7,2  | 1,2 | 2,7 | M5 | 3  | 9   | 5 | 27,5 | 34,5 | 41,5 | 8    | 3 | 14  |
| 10 | M15X1,5 | 12  | 9,8  | 2   | 3,5 | M5 | 5  | 14  | 7 | 33,5 | 40   | 47   | 10,5 | 4 | 19  |
| 16 | M22X1,5 | 19  | 16,8 | 2   | 4   | M5 | 5  | 20  | 6 | 40   | 45   | 50   | 13   | 5 | 27  |